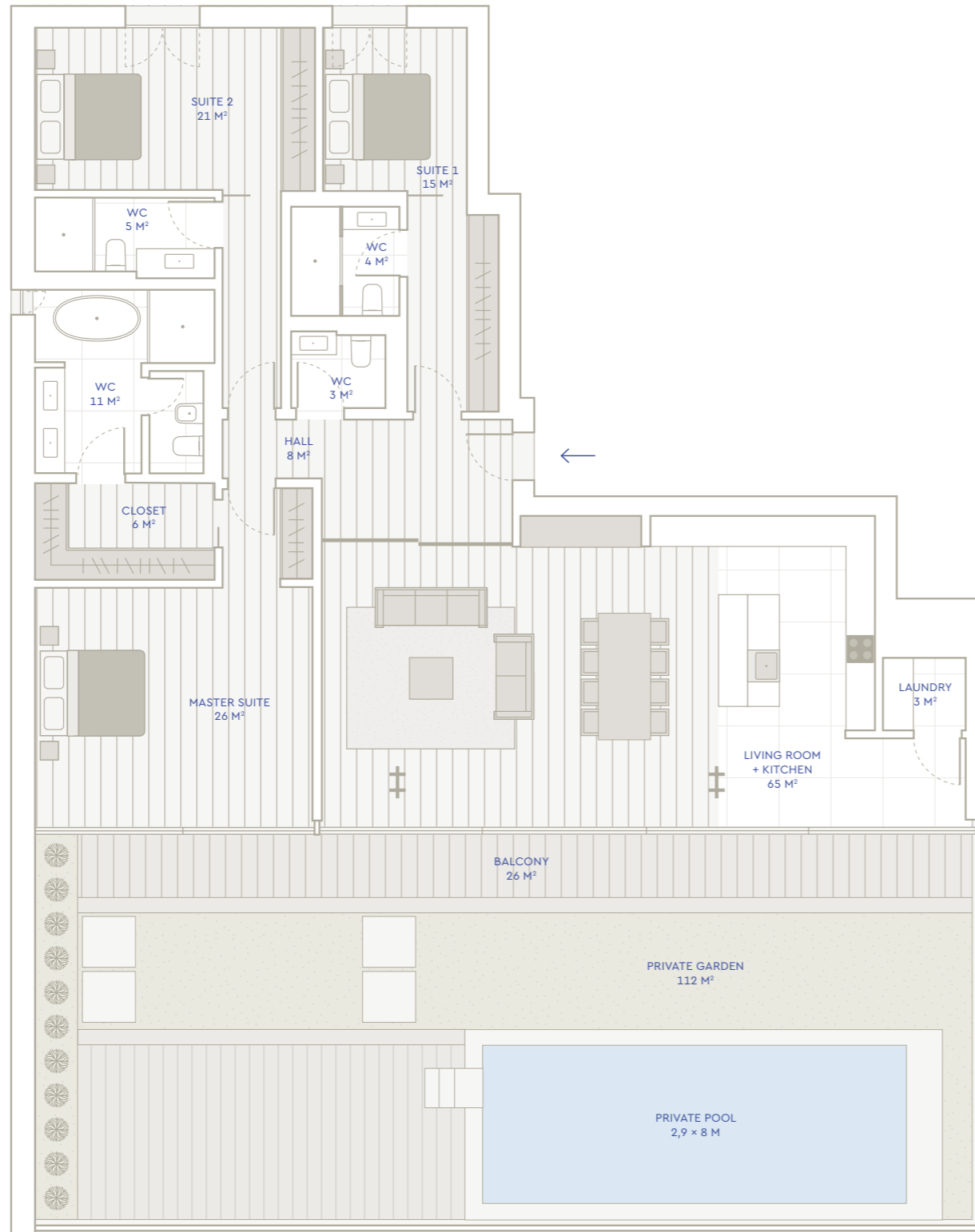


# VILLA MARIA PIA

MAJESTY BY THE SEA



**T3**

APARTMENT 6

**331m<sup>2</sup>**

TOTAL AREA

GROSS INTERIOR AREA

193m<sup>2</sup>

NET INTERIOR AREA

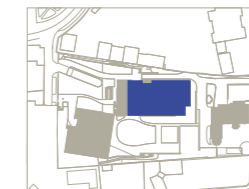
167m<sup>2</sup>

NET EXTERIOR AREA

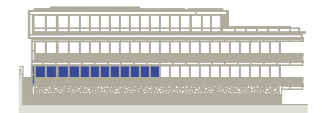
138m<sup>2</sup>

PARKING SPACES

3



SOUTH GARDEN



FLOOR 0

**WITHOUT SCALE**

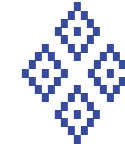
All elements in this document are merely an indication, may be altered and do not hold legally.

The developer reserves the right to freely make alterations to the dimensions and equipments in accordance to the technical limitations of the construction.



STONE

+351 210 416 350 / +351 965 915 993  
Av. da Liberdade 240-5°  
1250-148 Lisboa - Portugal



# VILLA MARIA PIA

MAJESTY BY THE SEA



**T4**

APARTMENT 7

**517m<sup>2</sup>**

TOTAL AREA

GROSS INTERIOR AREA

317m<sup>2</sup>

NET INTERIOR AREA

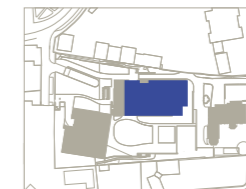
285m<sup>2</sup>

NET EXTERIOR AREA

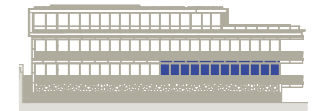
200m<sup>2</sup>

PARKING SPACES

3



SOUTH GARDEN



FLOOR 0

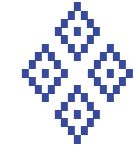
### WITHOUT SCALE

All elements in this document are merely an indication, may be altered and do not hold legally.

The developer reserves the right to freely make alterations to the dimensions and equipments in accordance to the technical limitations of the construction.

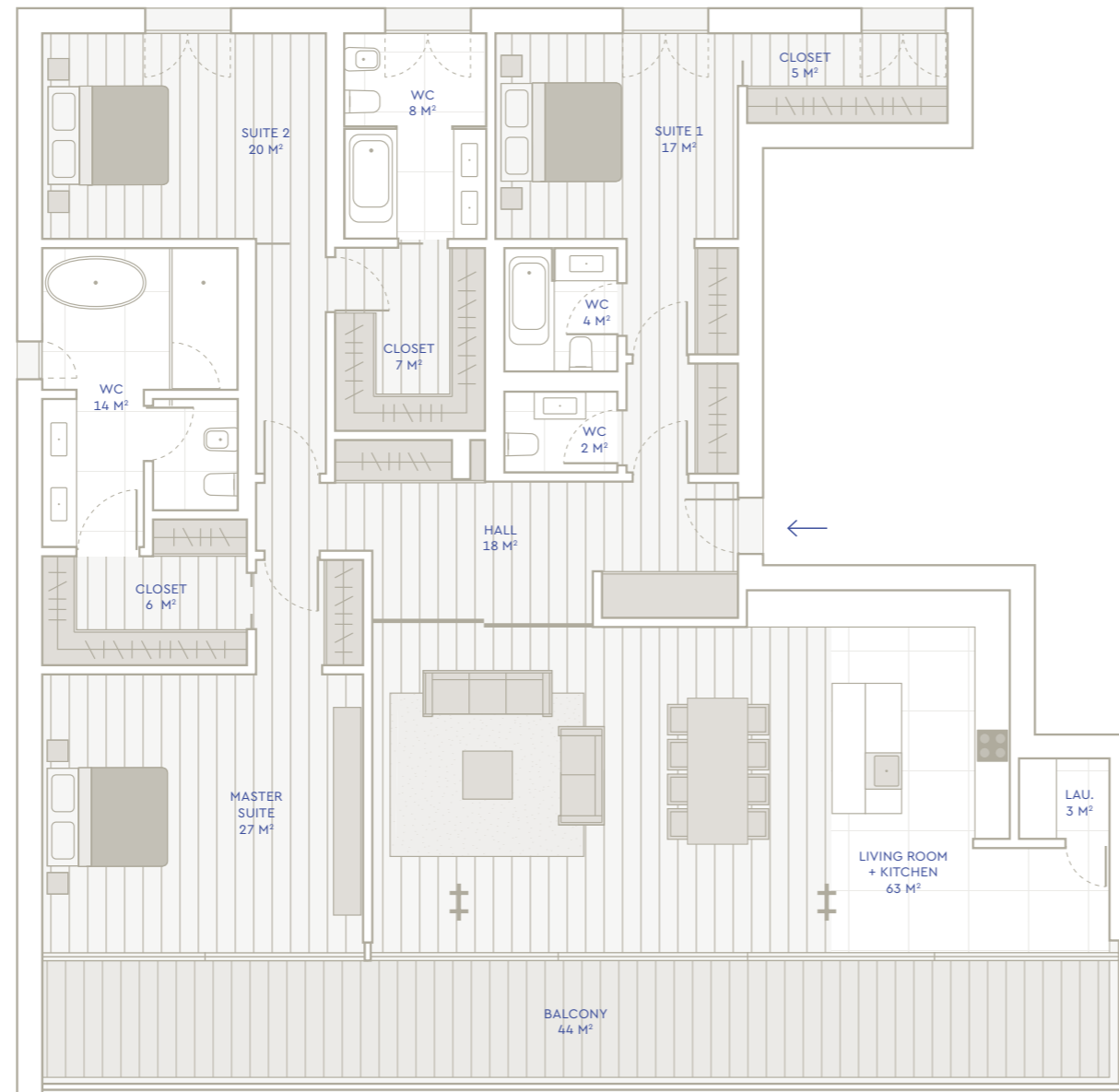


+351 210 416 350 / +351 965 915 993  
Av. da Liberdade 240-5º  
1250-148 Lisboa - Portugal



# VILLA MARIA PIA

MAJESTY BY THE SEA



**T3**

APARTMENT 8

**269m<sup>2</sup>**

TOTAL AREA

GROSS INTERIOR AREA

225m<sup>2</sup>

NET INTERIOR AREA

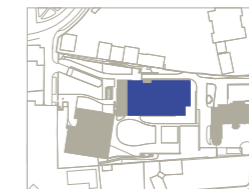
194m<sup>2</sup>

NET EXTERIOR AREA

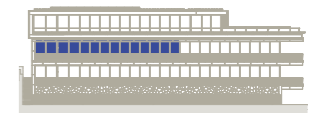
44m<sup>2</sup>

PARKING SPACES

3



SOUTH GARDEN



FLOOR 1

### WITHOUT SCALE

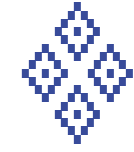
All elements in this document are merely an indication, may be altered and do not hold legally.

The developer reserves the right to freely make alterations to the dimensions and equipments in accordance to the technical limitations of the construction.

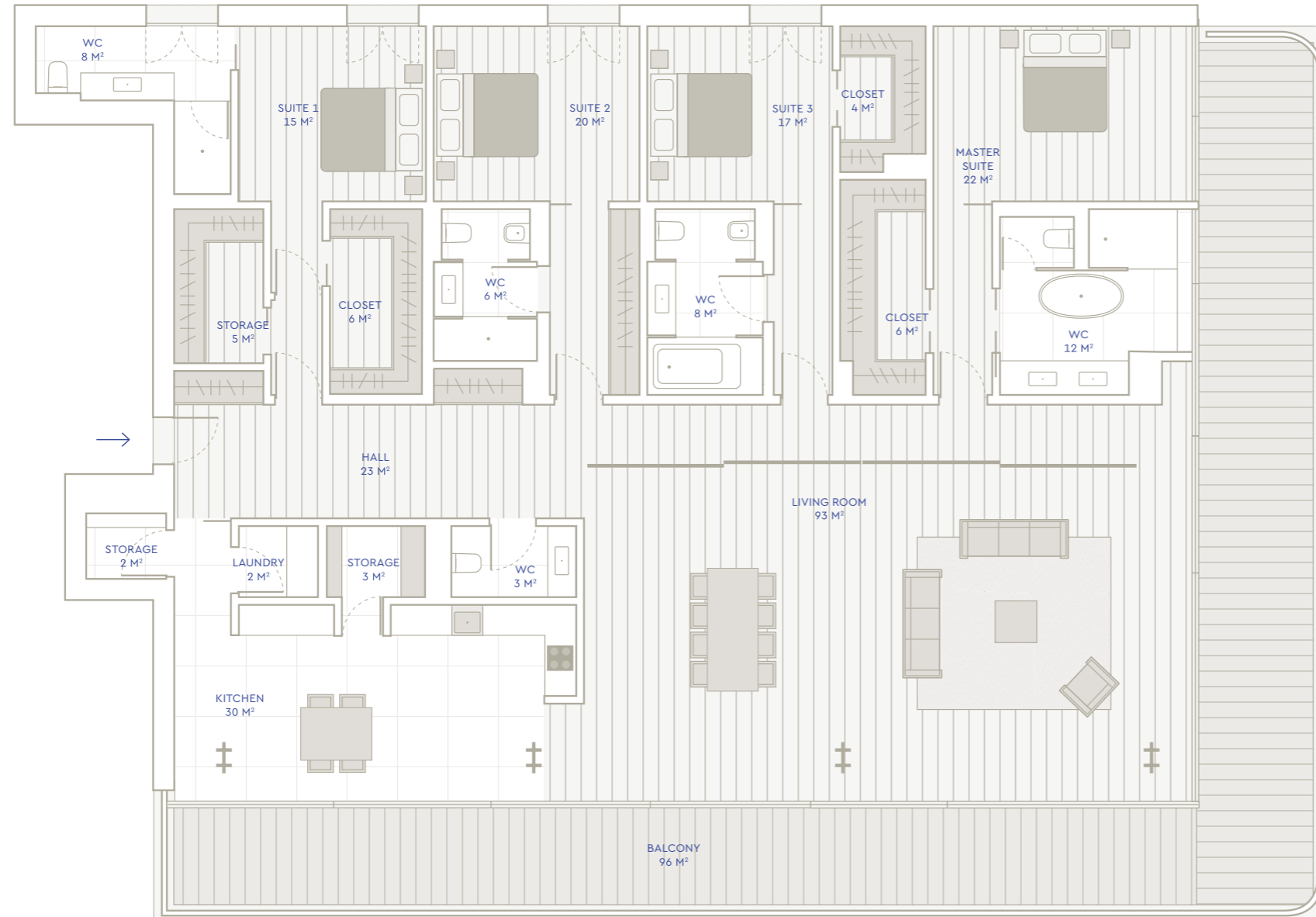


STONE

+351 210 416 350 / +351 965 915 993  
Av. da Liberdade 240-5º  
1250-148 Lisboa - Portugal



**VILLA MARIA PIA**  
MAJESTY BY THE SEA



**T4**

APARTMENT 9

**412m<sup>2</sup>**

TOTAL AREA

GROSS INTERIOR AREA

316m<sup>2</sup>

NET INTERIOR AREA

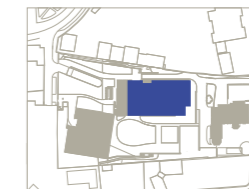
285m<sup>2</sup>

NET EXTERIOR AREA

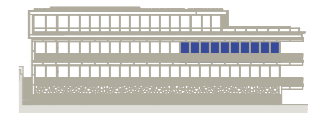
96m<sup>2</sup>

PARKING SPACES

3



SOUTH GARDEN



FLOOR 1

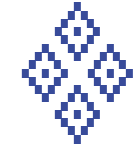
**WITHOUT SCALE**

All elements in this document are merely an indication, may be altered and do not hold legally.

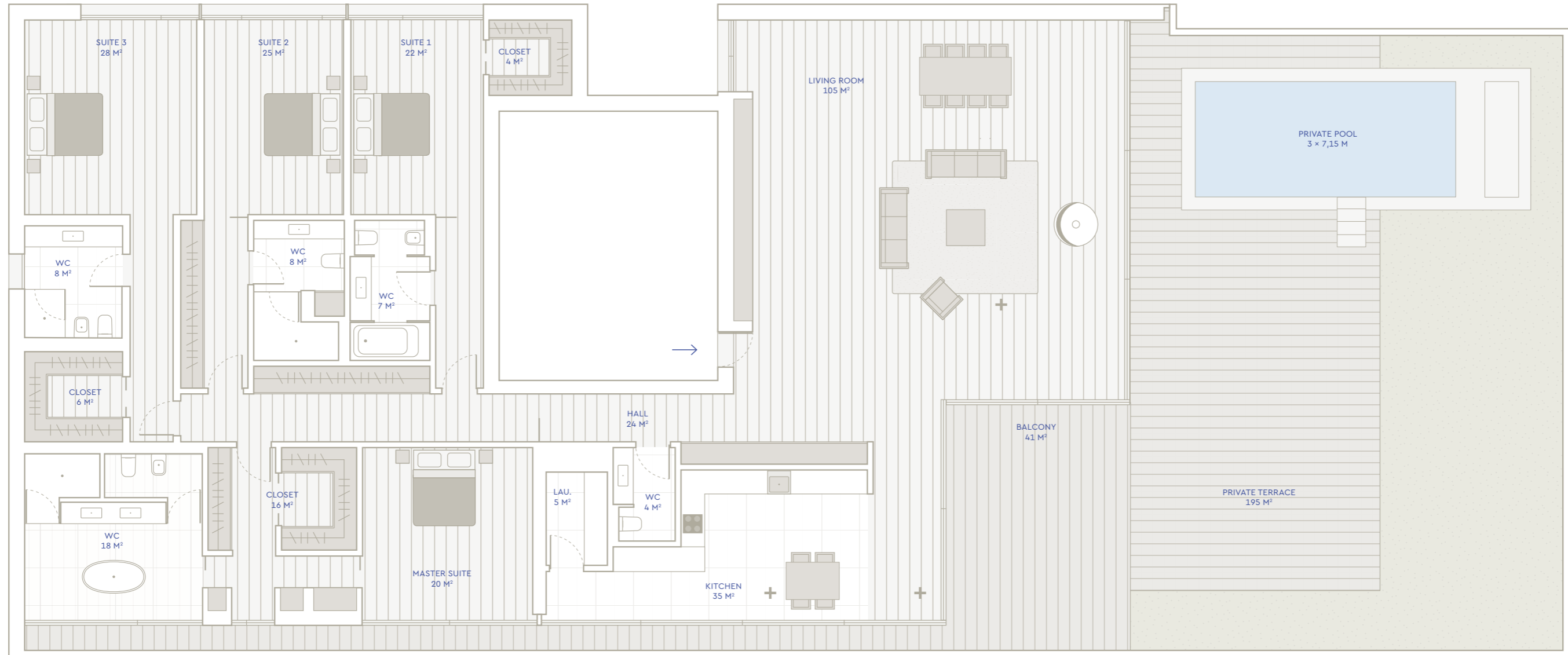
The developer reserves the right to freely make alterations to the dimensions and equipments in accordance to the technical limitations of the construction.



+351 210 416 350 / +351 965 915 993  
Av. da Liberdade 240-5º  
1250-148 Lisboa - Portugal



**VILLA MARIA PIA**  
MAJESTY BY THE SEA



**T4**

APARTMENT 10

**622m<sup>2</sup>**

TOTAL AREA

GROSS INTERIOR AREA

386m<sup>2</sup>

NET INTERIOR AREA

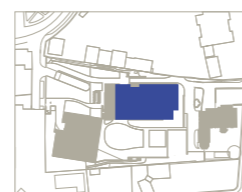
335m<sup>2</sup>

NET EXTERIOR AREA

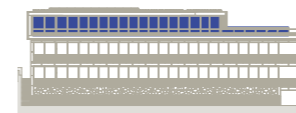
236m<sup>2</sup>

PARKING SPACES

4



**SOUTH GARDEN**



**FLOOR 2**

**WITHOUT SCALE**

All elements in this document are merely an indication, may be altered and do not hold legally.

The developer reserves the right to freely make alterations to the dimensions and equipments in accordance to the technical limitations of the construction.



+351 210 416 350 / +351 965 915 993  
Av. da Liberdade 240-5°  
1250-148 Lisboa - Portugal